

# House Warmings

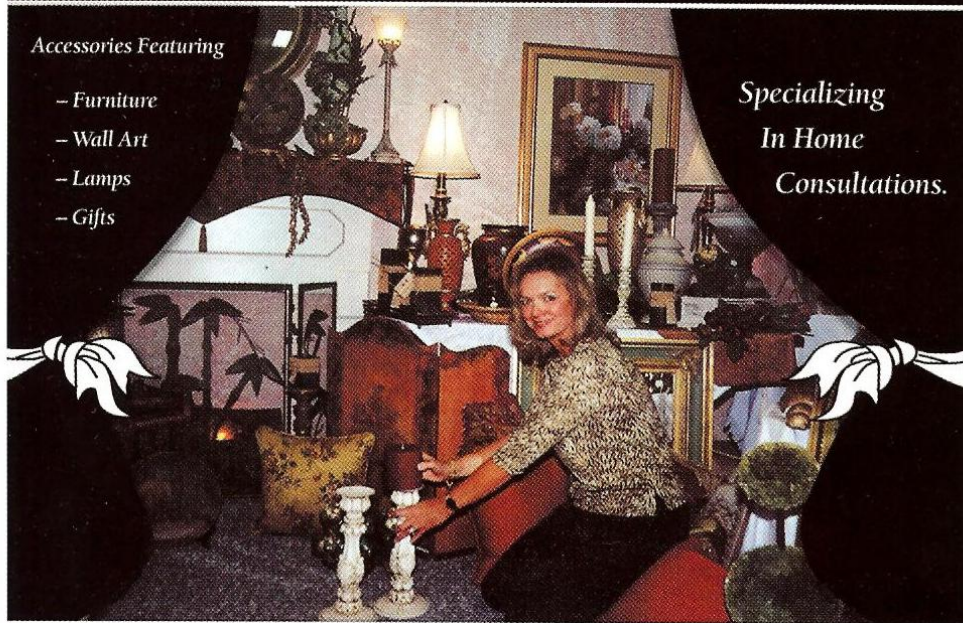
...creating a difference.

www.housewarmingsinc.com

*Accessories Featuring*

- Furniture
- Wall Art
- Lamps
- Gifts

*Specializing  
In Home  
Consultations.*



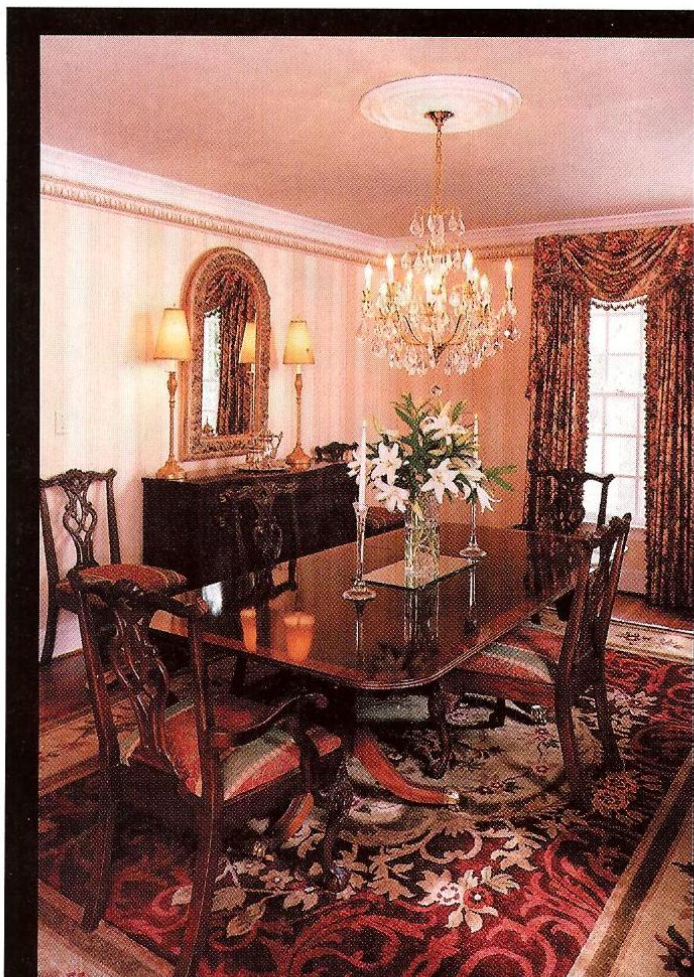
7340 Creedmoor Rd. – Stonehenge Market – (919) 844-3811

to the wall above a painting. Uplights and track lighting are other options.”

Framing art can also be difficult. But the only hard-and-fast rule here is to make sure your mat isn't the same size as your frame. In other words, you don't want a 3-inch mat and a 3-inch frame. Mix and match so you've combined a 6-inch mat with a skinny frame, or a liner-sized mat with a big, ornate frame. You should also make sure the frame enhances, rather than overpowers, the artwork.

“The standard decorating rule is to hang artwork so there's 4 to 6 inches from the bottom of the frame to the mantle or the piece of furniture below it,” Pruitt said. “The standard for an open wall is to allow 60 inches from the floor to the center of the painting—that's eye level for the average person. But of course something hung in a dining room where everyone is almost always sitting down can be hung a little lower, 6 to 12 inches above the chair rail.”

Whether you've bought artwork in hopes of increasing your investment or just because



## STEINER SCHELFE

RESIDENTIAL/COMMERCIAL INTERIOR DESIGN

304-F WEST MILLBROOK RD./RALEIGH, NC 27609  
 VOICE: 845.5151 FAX: 845.5154  
 steinerschelfe@mindspring.com

INTERIOR DESIGN  
 REMODELING DESIGN

Please visit our online portfolio at  
[www.steinerschelfe.com](http://www.steinerschelfe.com)

